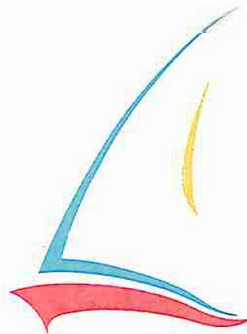


THE NAPA
YACHT CLUB

THE NAPA YACHT CLUB is a unique homebuying opportunity for the person who can treasure the beauty and serenity of this rich winemaking region, yet be able to experience the distinct pleasure of living in a completely water-oriented community. With most homes having their own private docking facilities, you can enjoy water access direct to San Francisco Bay.

A truly unexpected pleasure in the Napa Valley. Never before has there been a community like *The Napa Yacht Club*. Come and experience a legend in the making at the beautiful single family homes of *The Napa Yacht Club* and embark on exciting luxury living.



The Napa Yacht Club
17 Peninsula Court
Napa, CA 94559
707-226-1641

THE FEATURES

LUXURIOUS LIVING AREA

Hand set ceramic tile entry
Dramatic vaulted ceilings throughout
French patio doors off family room
Wood-burning fireplace with log lighter
“Elite” six panel interior doors
Oak stair railings & banister
Designer selected polished brass lever door handles
Covered front entry or portico on most plans
Decorator upgraded light fixtures
Plant shelves
White finish aluminum dual-glazed
sliding windows with locks

GOURMET KITCHENS

Dramatic coffered ceiling (most plans)
Separate breakfast nook
Mortar set ceramic tile countertops and full backsplash
Custom decorator cabinets
Spacious separate pantry
Snack bar
Recessed individual ceiling down lights
Under cabinet fluorescent lights
Double *Kohler*® sinks with single lever faucet

Jenn Aire® gas downdraft cooktop with barbecue

GE Potscrubber® dishwasher with energy saving cycle

GE® monogram series microwave/convection oven and self cleaning oven combination

GE® monogram series trash compactor

In-sink *ISE* disposal

Special island workspace (*The Costa Brava*)

Built-in matching desk (*The Nantucket*)

Garden window (*The Capri*)

WELL DESIGNED BEDROOMS

“Elite” sliding wardrobe doors

Spacious walk-in closet

See-through fireplace

in master bedroom/master bath (*The Costa Brava*)

DISTINCTIVE BATHS

Ceramic tile tub/shower surround

Enameled steel tub with shower in second bath

Deluxe medicine cabinet

Theatrical lighting

In master bath:

Wideset polished brass faucets and trim

Separate carpeted vanity area

Ceramic tile vanity
Kohler® basins and water closet
Oval tub with Jacuzzi® jets and separate shower
(*The Capri, The Catalina, The Nantucket and
The Costa Brava*)

OTHER EXCEPTIONAL FEATURES

Beautiful concrete tile roof
3 car garage (*The Costa Brava*)
Additional workspace in garage (*The Nantucket*)
Gated entry with intercom
Roll-up overhead insulated garage doors
Wall-to-wall carpeting
Ceiling fans
Cable TV and phone jacks
Enclosed vented laundry room with storage cabinets
Plumbed for automatic washer
220 V wiring for dryer (gas also available)
Dead bolt "Protecto-Lok" entry with security viewer
Electric door chimes
Smoke detectors
Fire sprinklers
Silent electric light switches
Full rain gutter and downspouts

Underground utilities
Prepped for air conditioning

AN ENERGY-EFFICIENT HOME

Energy-efficient forced air heating
with set-back thermostat (air-conditioning optional)
Fully insulated exterior walls and ceilings
Weatherstripped exterior doors
3½-gallon flush toilets
Dishwasher with energy saving drying cycle
Dual-glazed windows and sliding glass doors
Oven door window
Glass fireplace enclosure
"Therma-Tru" non-warp entry doors

Because of our continuing program of research and development or changes in material availability, we reserve the right to substitute product and design and alter prices or terms without notice or obligation.





SONOMA

NAPA

Imola Avenue

116

116

12

121

12

22

29

12

80

680

29

37

37

NOVATO

101

SAN
PABLO
BAY

VALLEJO

780

SAN
RAFAEL

4

MARTINEZ

80

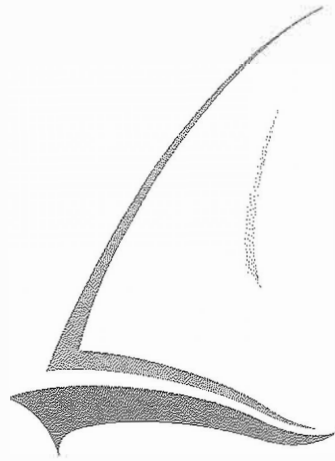
680

580

RICHMOND



The Capri

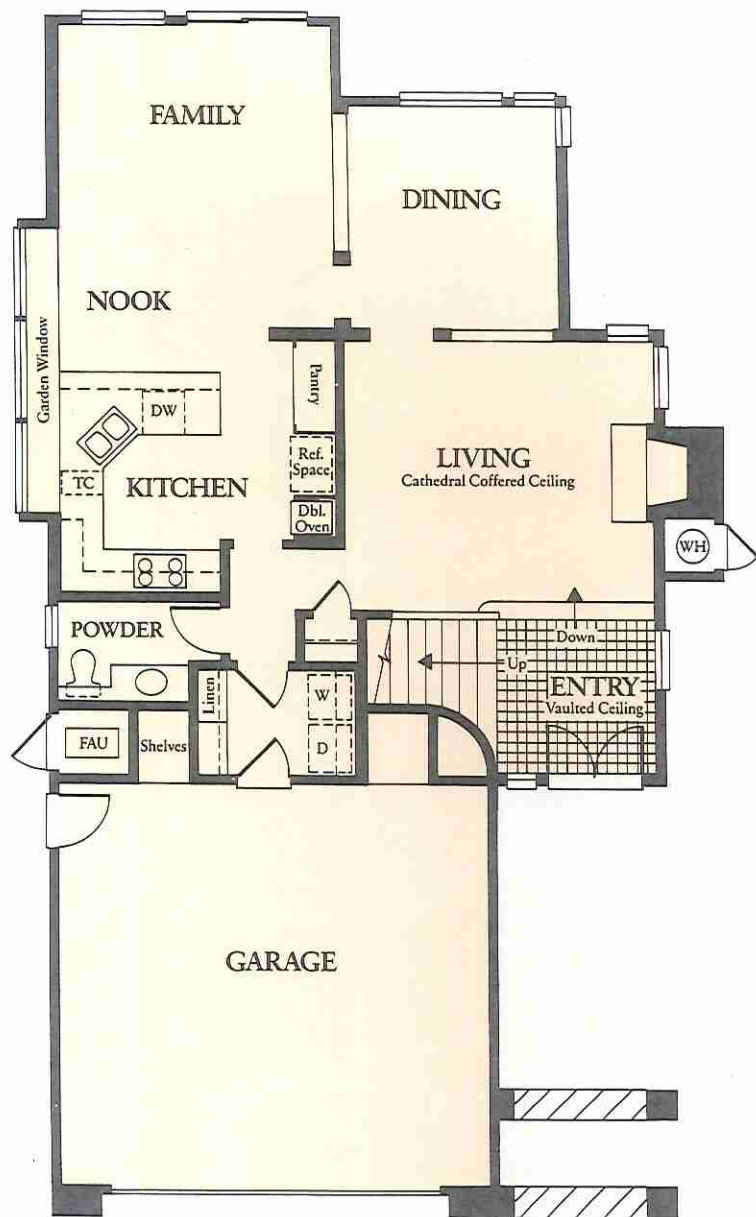


P L A N 1

3-Bedrooms, 2.5 Baths

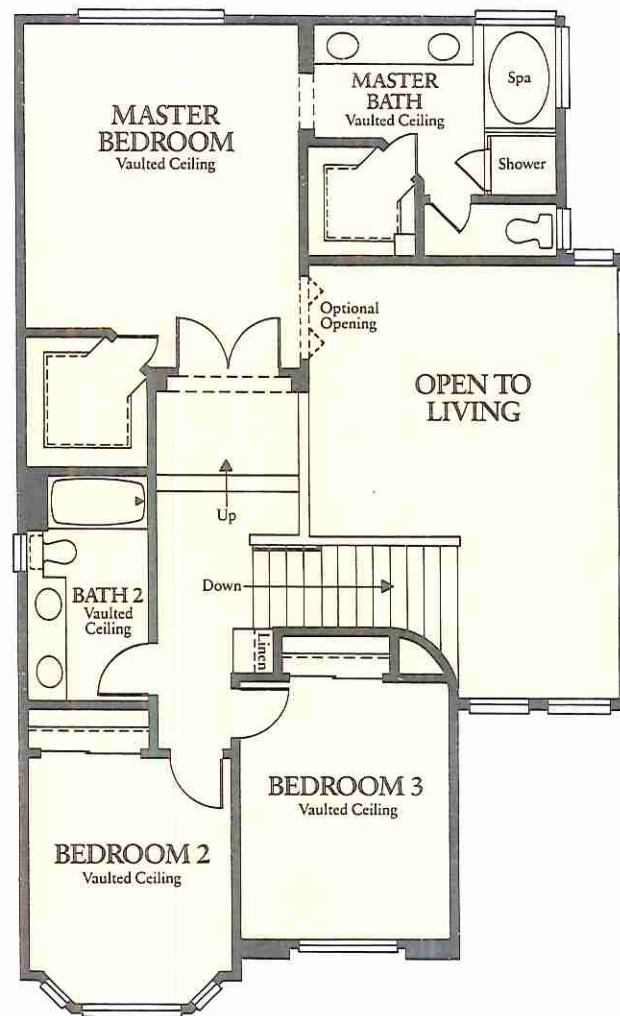
Graceful elegance is yours in this spacious 2 story home. Here, the sun shines through the many enchantingly designed windows to give *The Capri* plan an exceptionally light and airy feeling. The living room, with dramatic cathedral coffered ceilings are sure to please.

In addition to many exciting amenities, *The Capri* also features the drama of rising vaulted ceilings and a kitchen a chef will adore.



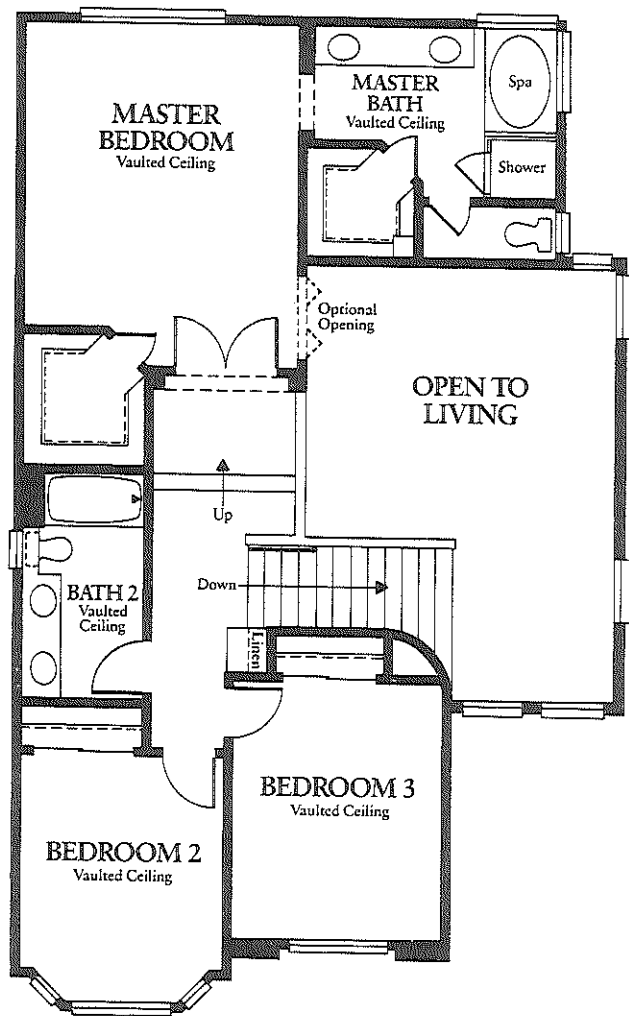
FIRST FLOOR

Windows vary per elevation



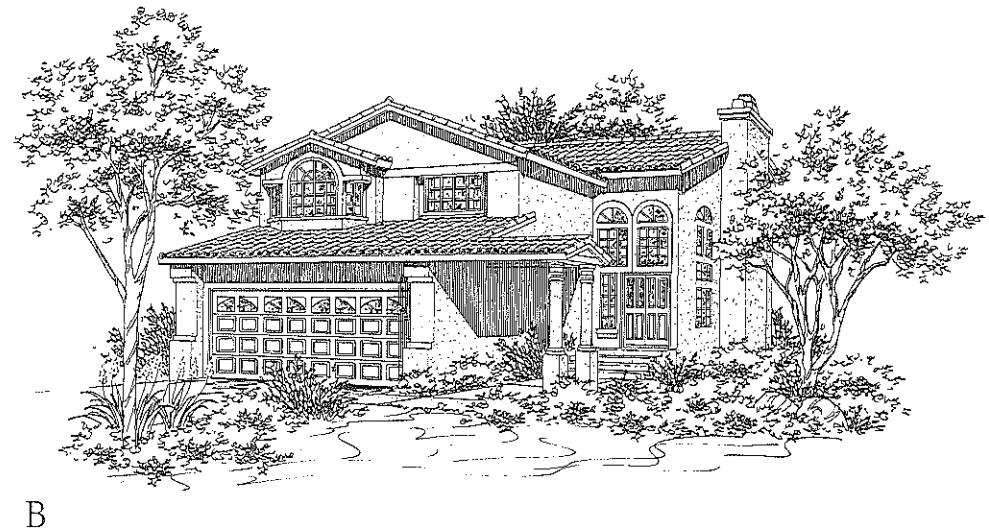
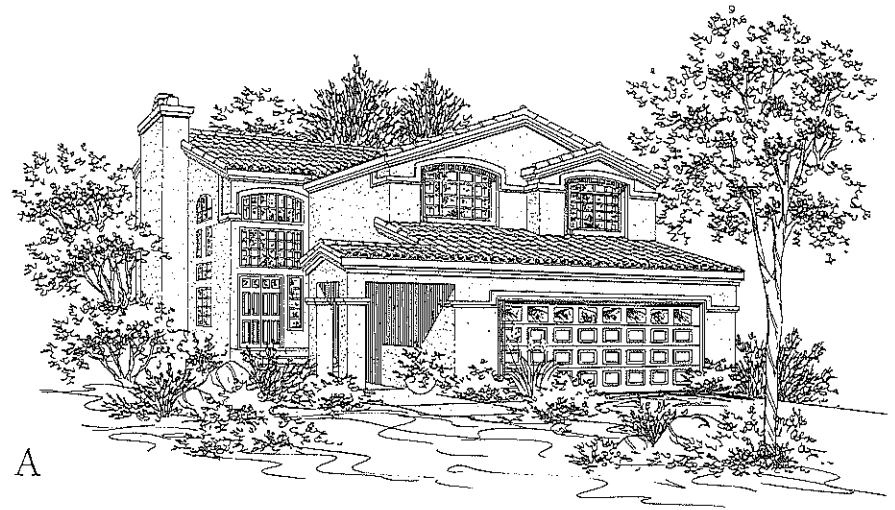
SECOND FLOOR

Artist's Concept

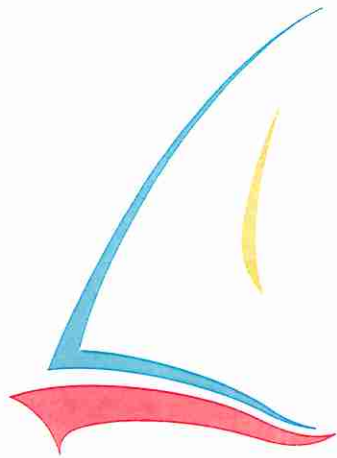


SECOND FLOOR

Artist's Concept



THE ACAPULCO

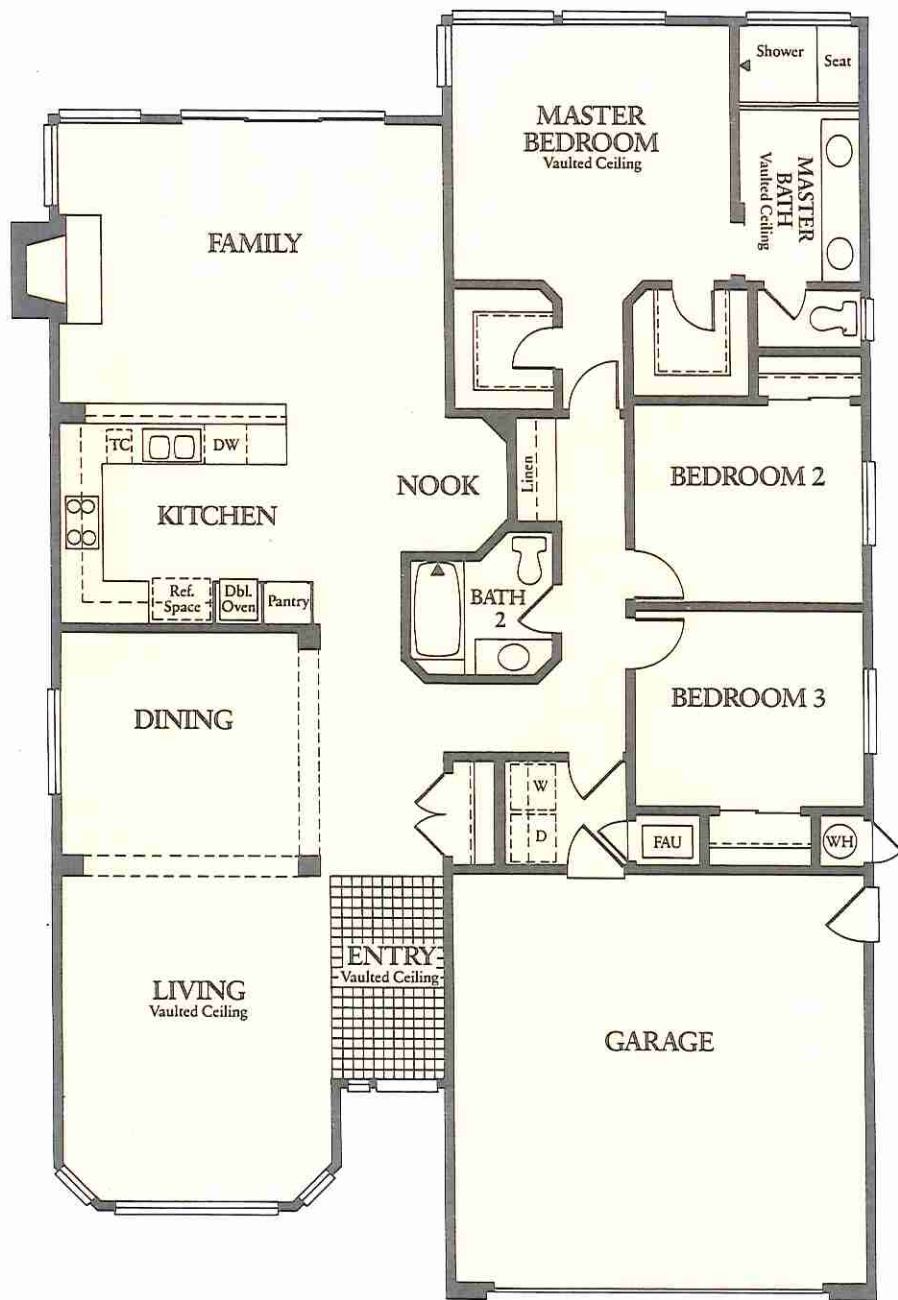


P L A N 2

3-Bedrooms, 2-Baths

Graceful elegance is yours in this spacious ranch-style home. Here, the sun shines through the many enchantingly designed windows to give *The Acapulco* plan an exceptionally light and airy feeling. The family room, with a wall of floor-to-ceiling glass, brings the distinctive beauty of this water-oriented community dramatically inside.

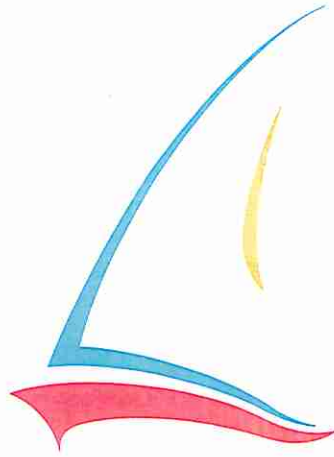
In addition to many exciting amenities, *The Acapulco* also features the drama of rising vaulted ceilings throughout and strategically located plant shelves for unique accessorizing of this beautiful home.



Windows vary per elevation

Artist's Concept

THE CATALINA

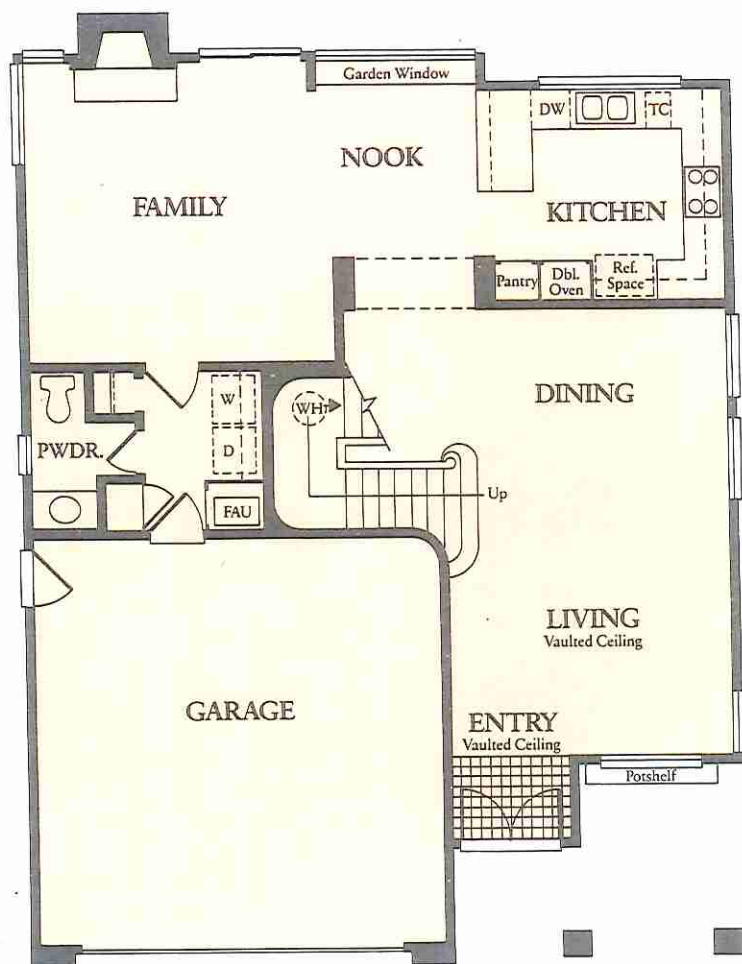


P L A N 3

*4-Bedrooms, 2½-Baths
or 3-Bedrooms
with optional Retreat*

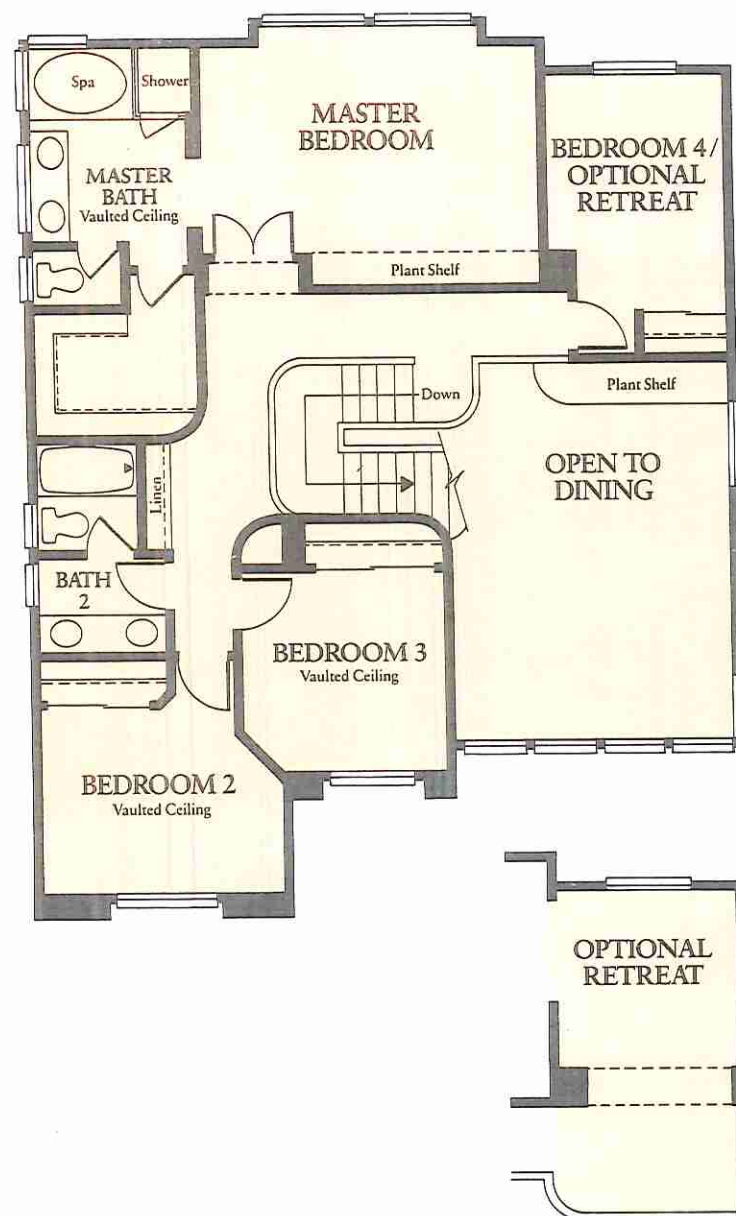
Exciting details throughout this magnificent two-story home make it truly a landmark in luxury. From the moment you step inside, your eyes are attracted upwards to the dramatic vaulted ceilings and the grand staircase with oak banisters. As you ascend the stairs, your feet sink into the thick, plush carpet that extends wall-to-wall. The master suite is a study in spacious elegance. The bath features a separate whirlpool oval tub and shower, and theatrical lighting illuminates the dual vanities. A private dressing area adjoins a voluminous walk-in closet.

The imaginative use of windows throughout makes *The Catalina* plan a sparkling foundation of superior family living.



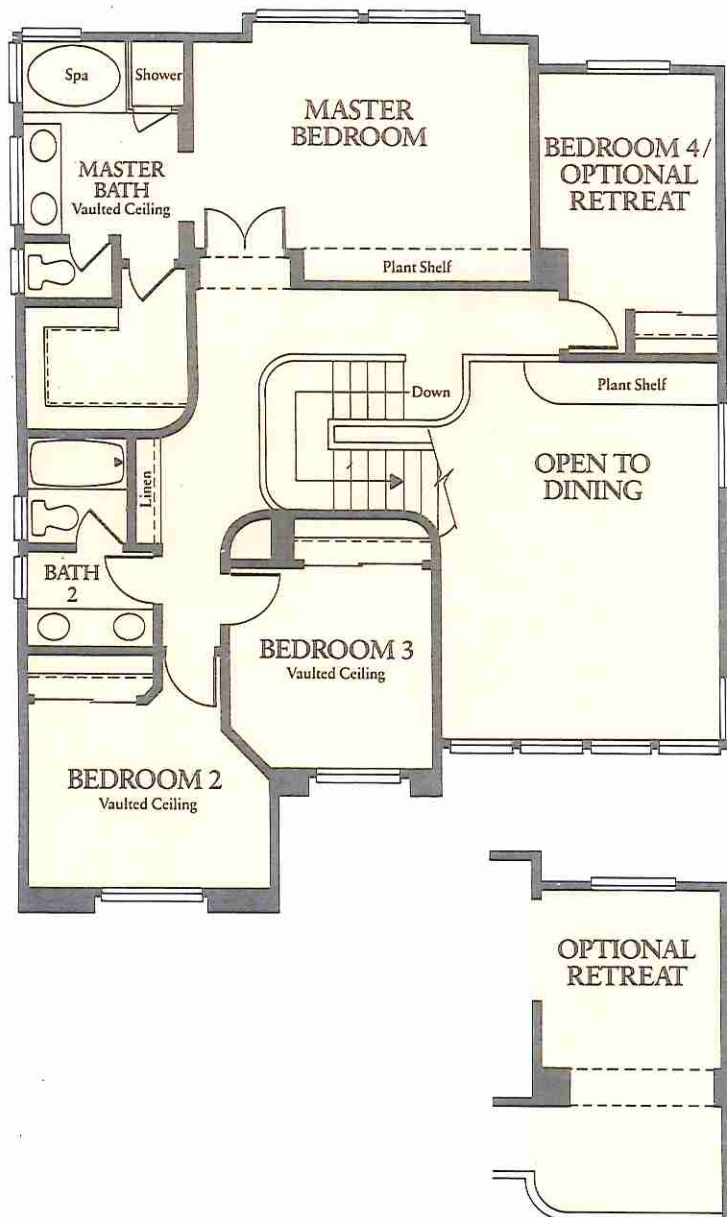
FIRST FLOOR

Windows vary per elevation



SECOND FLOOR

Artist's Concept



SECOND FLOOR

Artist's Concept

A



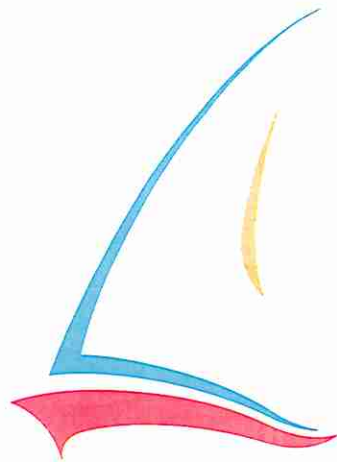
B



C



THE NANTUCKET

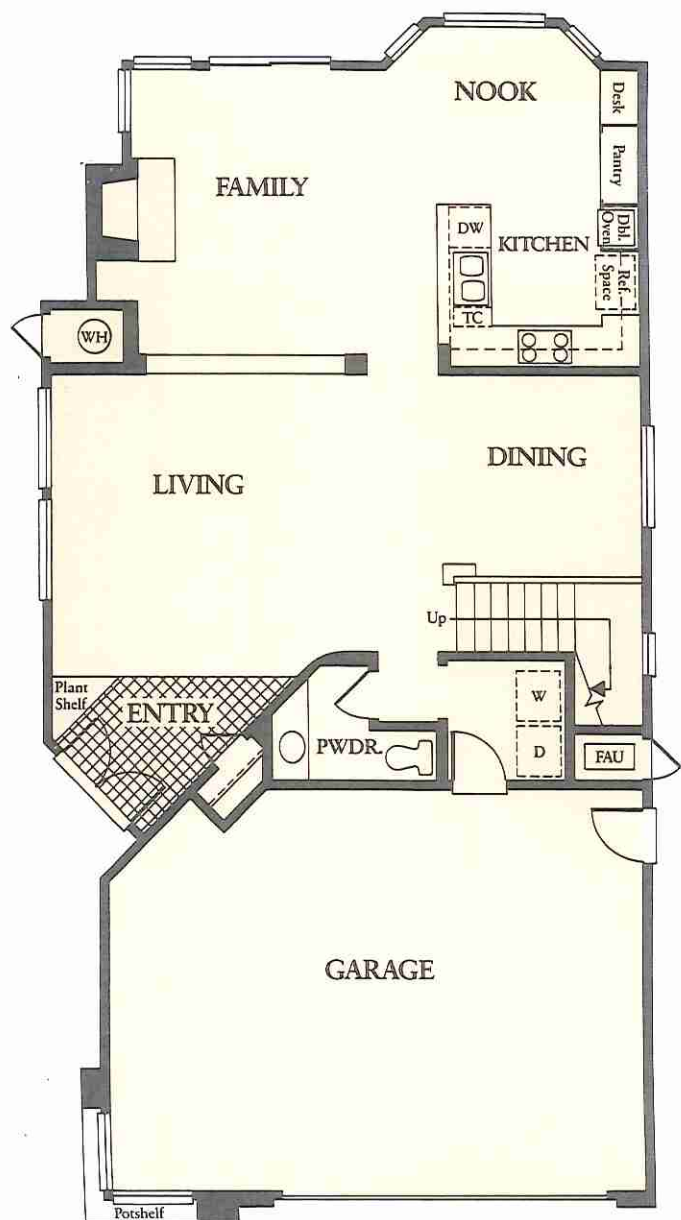


P L A N 4

*4-Bedrooms, 2½-Baths
or 3-Bedrooms
with optional alcove*

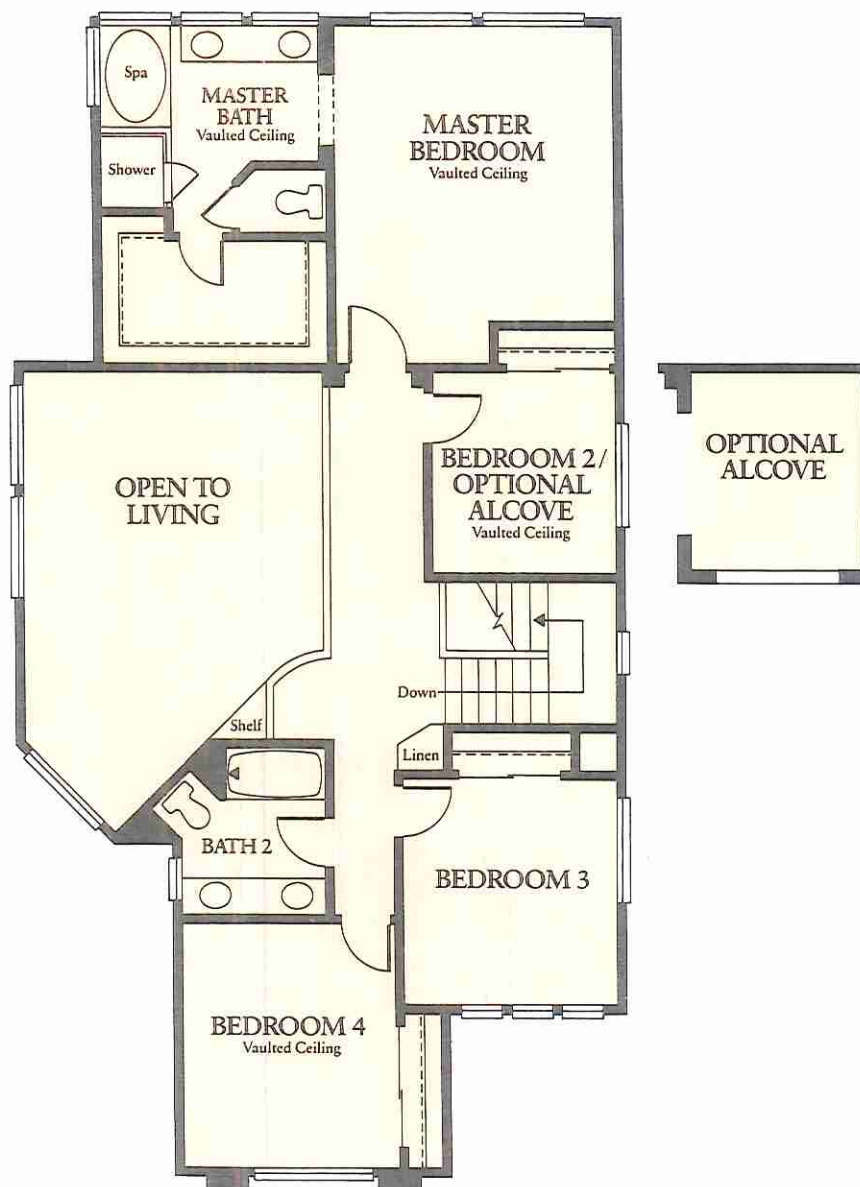
Explore family living from a delightful new angle in this roomy executive style home. *The Nantucket* is an example of traditional living spaces made fresh with an interesting array of window treatments and deluxe amenities. A cozy fireplace is a natural focal point in the spacious window-filled family room with adjacent dining nook. The kitchen is a tribute to the most ambitious gourmet with double oven, separate pantry, ceramic tile, and oak cabinetry with built-in desk.

This innovative floorplan is refreshing in concept and luxurious in execution.



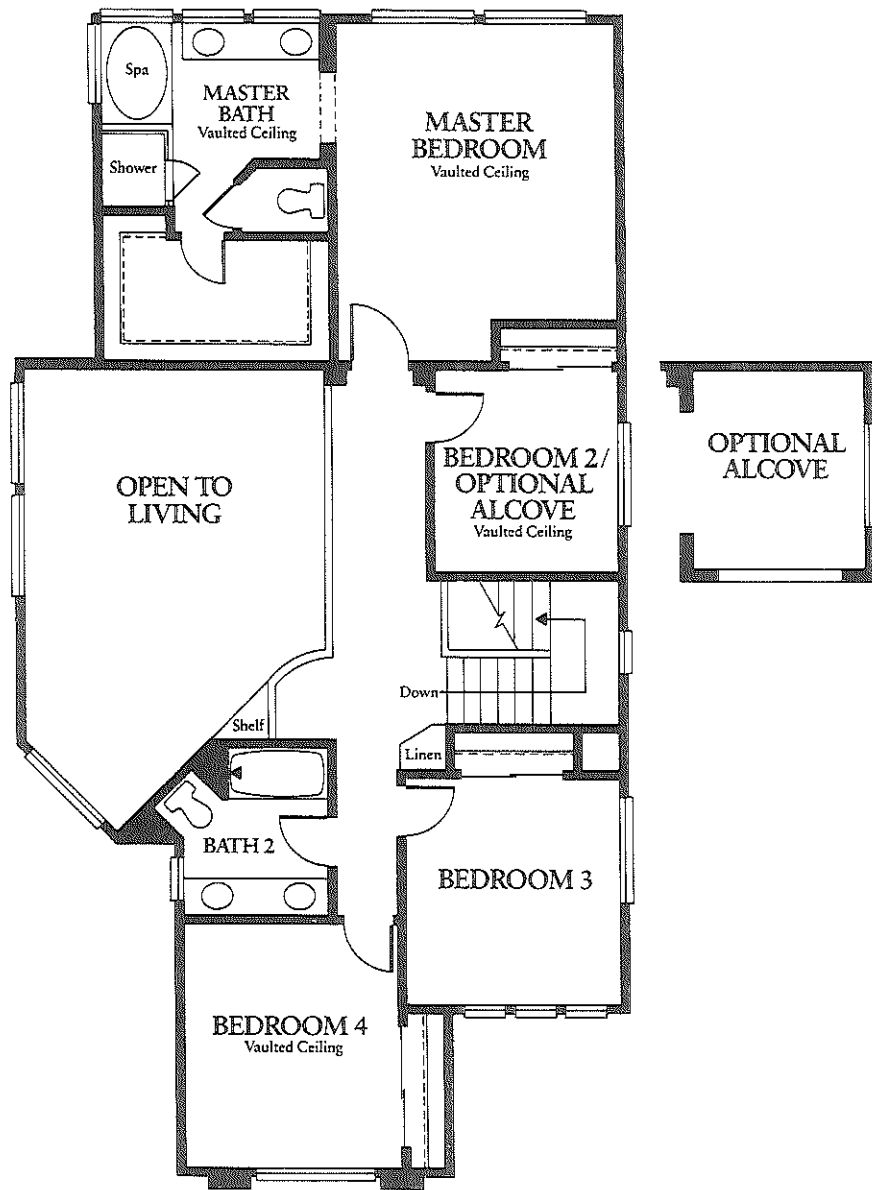
FIRST FLOOR

Windows vary per elevation



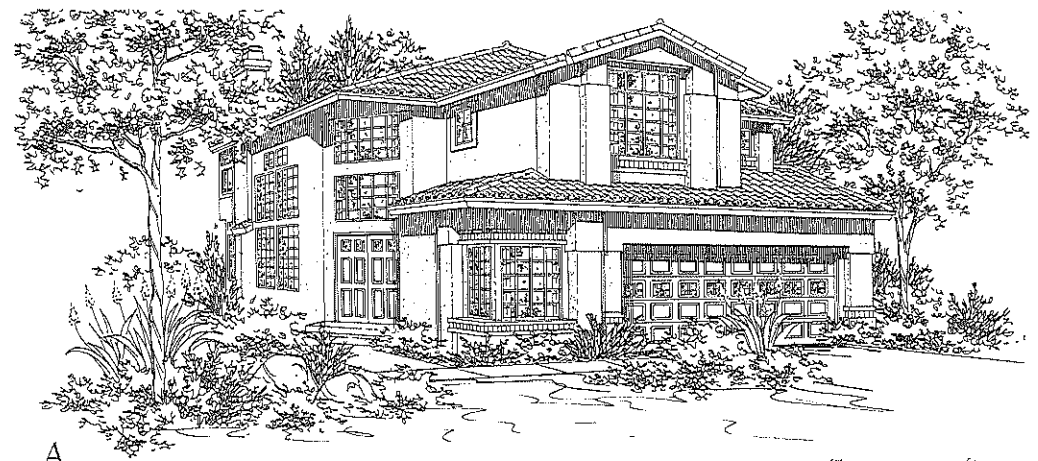
SECOND FLOOR

Artist's Concept



SECOND FLOOR

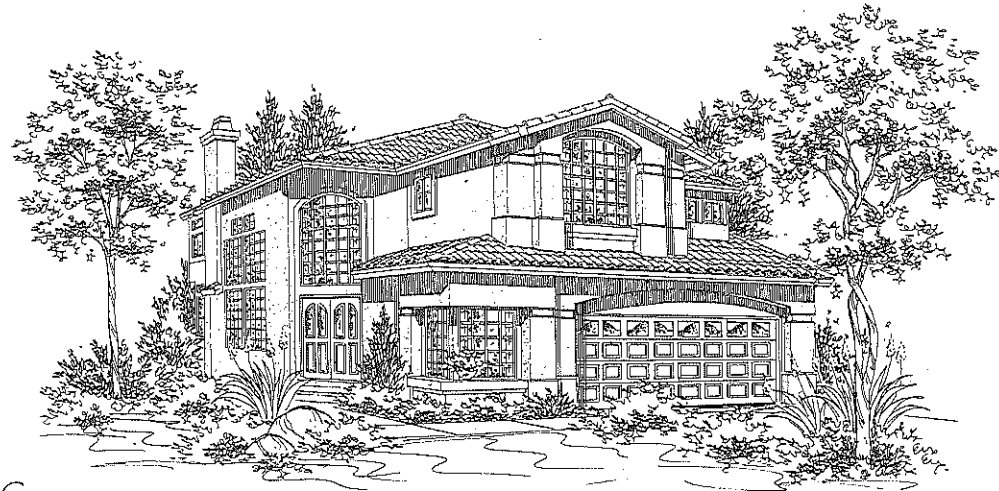
Artist's Concept



A



B



C

THE COSTA BRAVA



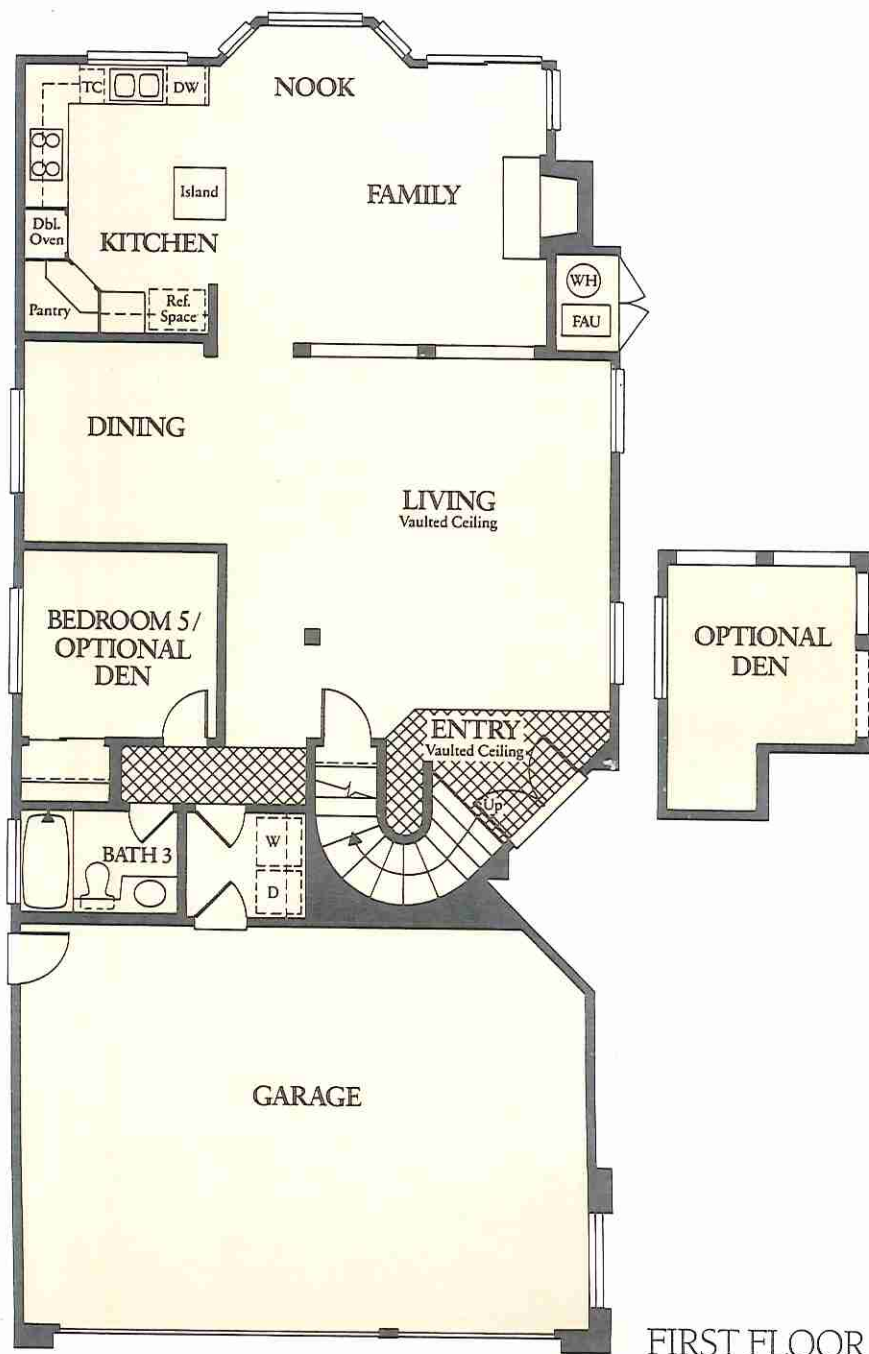
PLAN 5

*5-Bedrooms, 3-Baths
or 4-Bedrooms
plus optional Den*

Immerse yourself in unmatched luxury in this magnificent floorplan. Openness is the operative word here with emphasis upon soaring cathedral ceilings in the living room and the family room, breathtaking use of windows and a grand staircase.

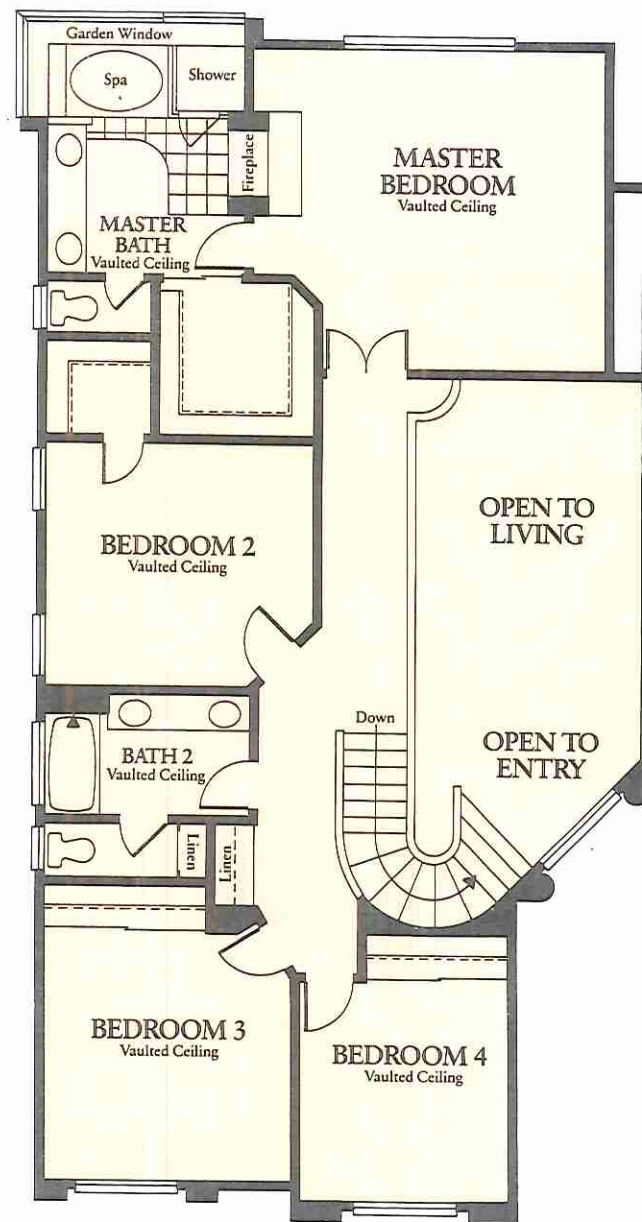
No detail has been overlooked, from the woodburning see-through fireplace in the master bedroom-bath to the French patio doors in the family room. The kitchen is superbly equipped with a double sink, double oven, rich decorator cabinetry, special island workspace and ceramic tiled counters. A large 3 car garage offers additional storage opportunities.

The spaciousness and elegance of *The Costa Brava* makes it a truly remarkable luxury home.



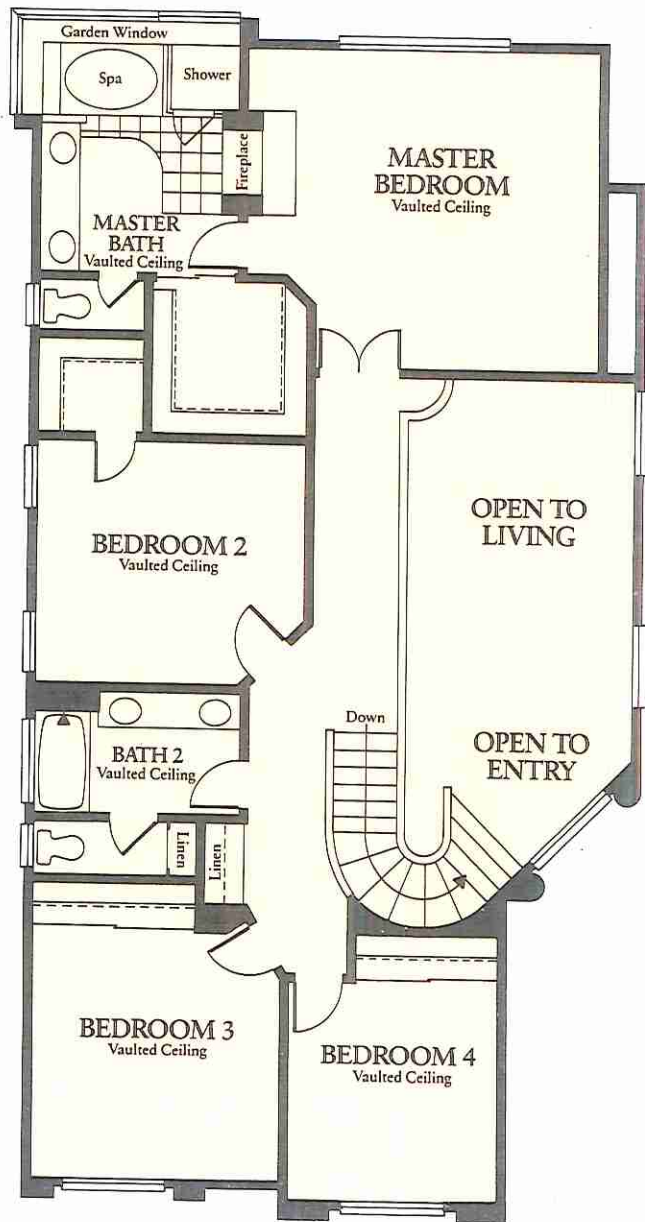
FIRST FLOOR

Windows vary per elevation



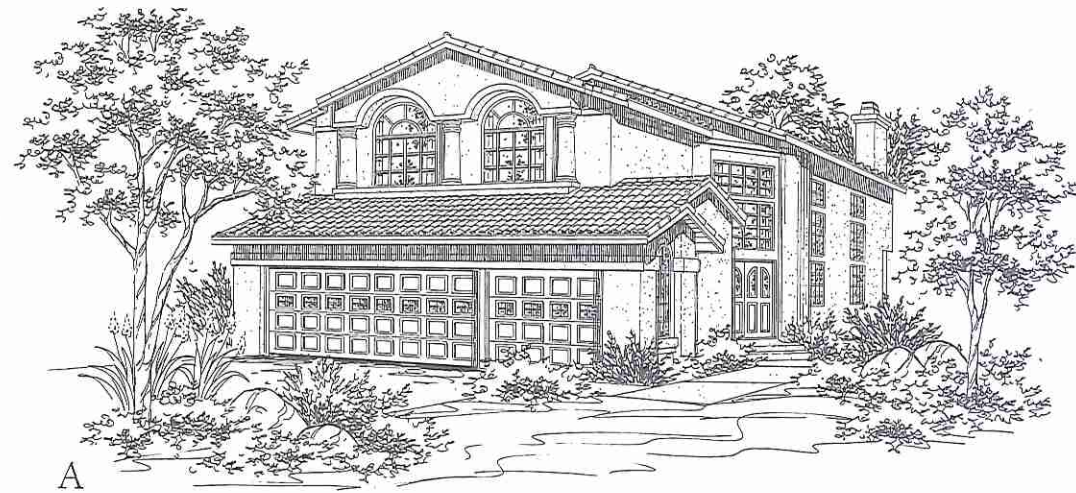
SECOND FLOOR

Artist's Concept

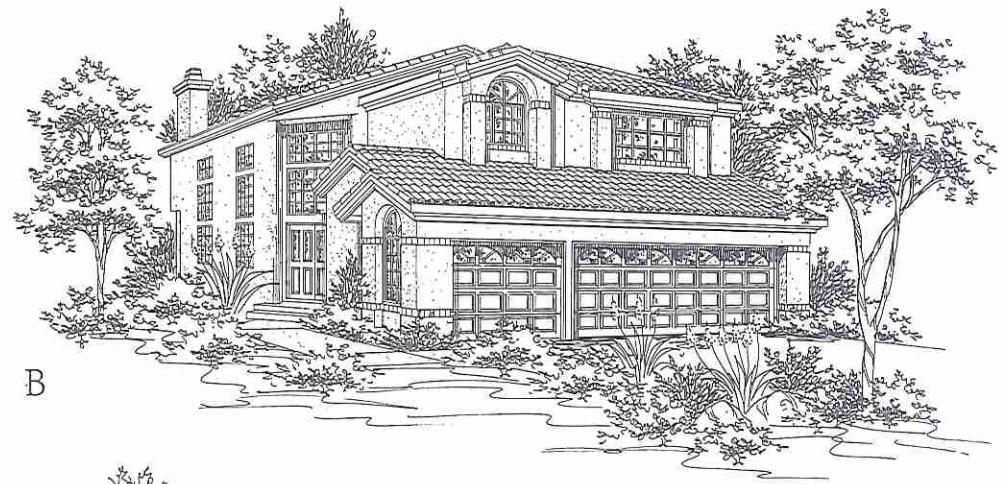


SECOND FLOOR

Artist's Concept



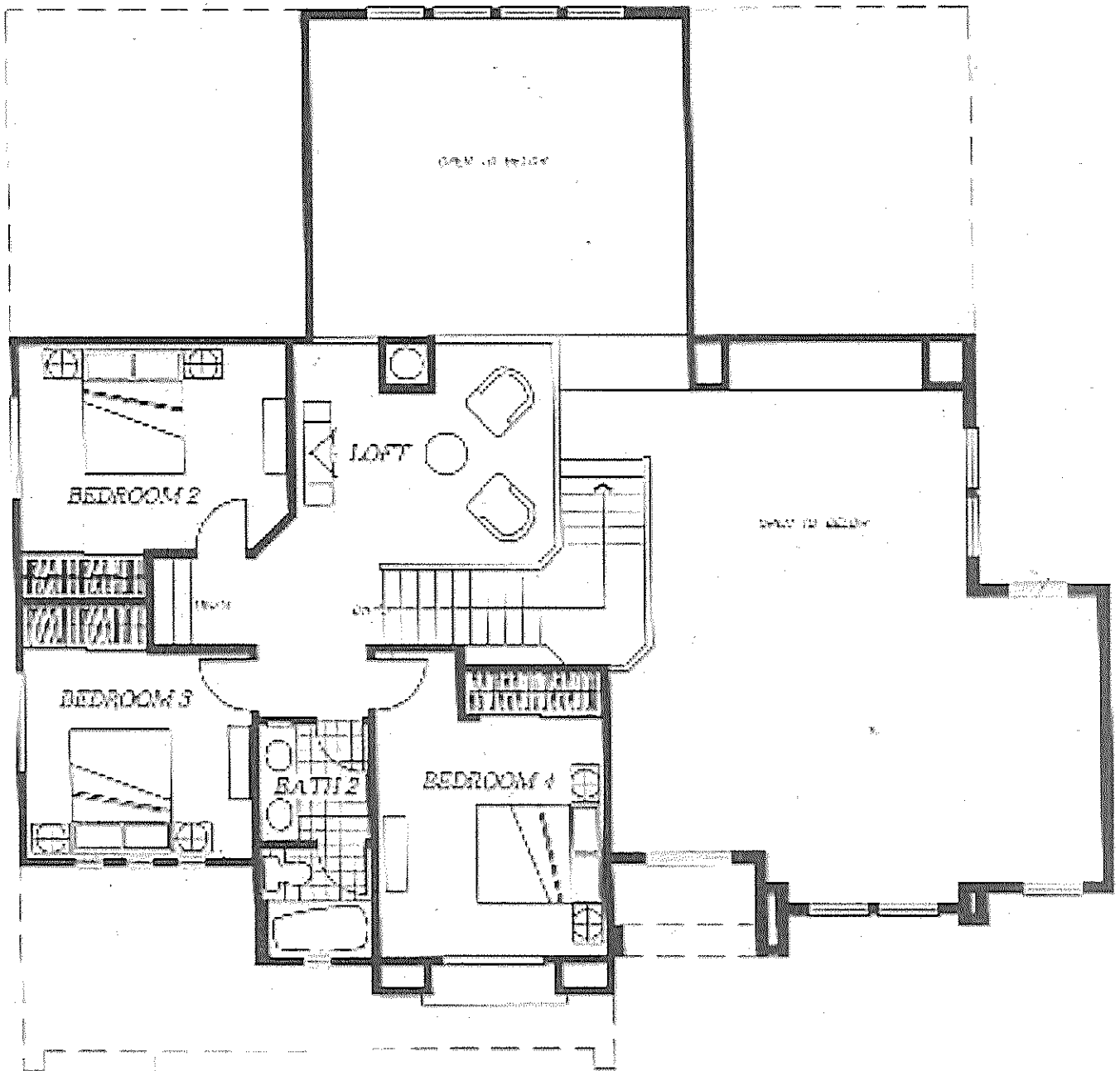
A



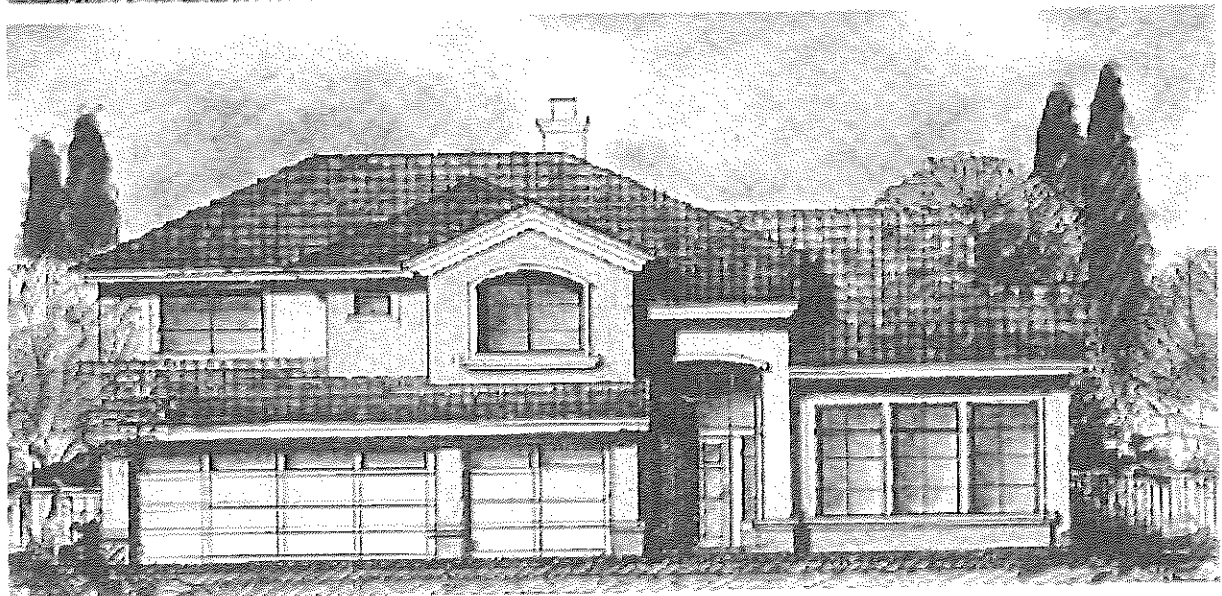
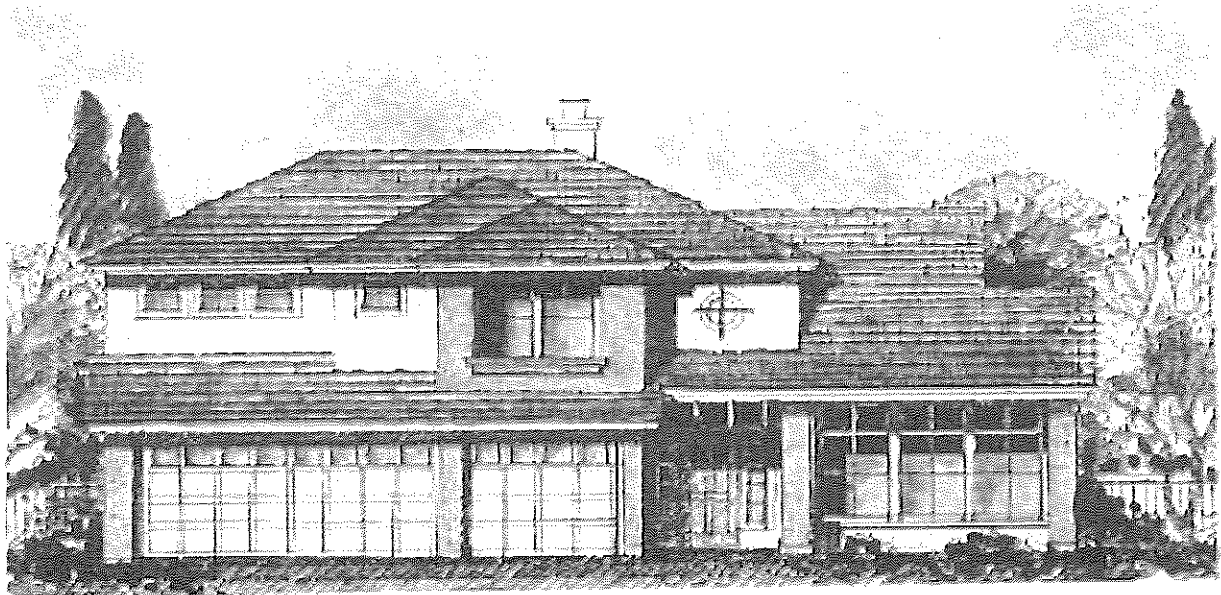
B



C



Second Floor



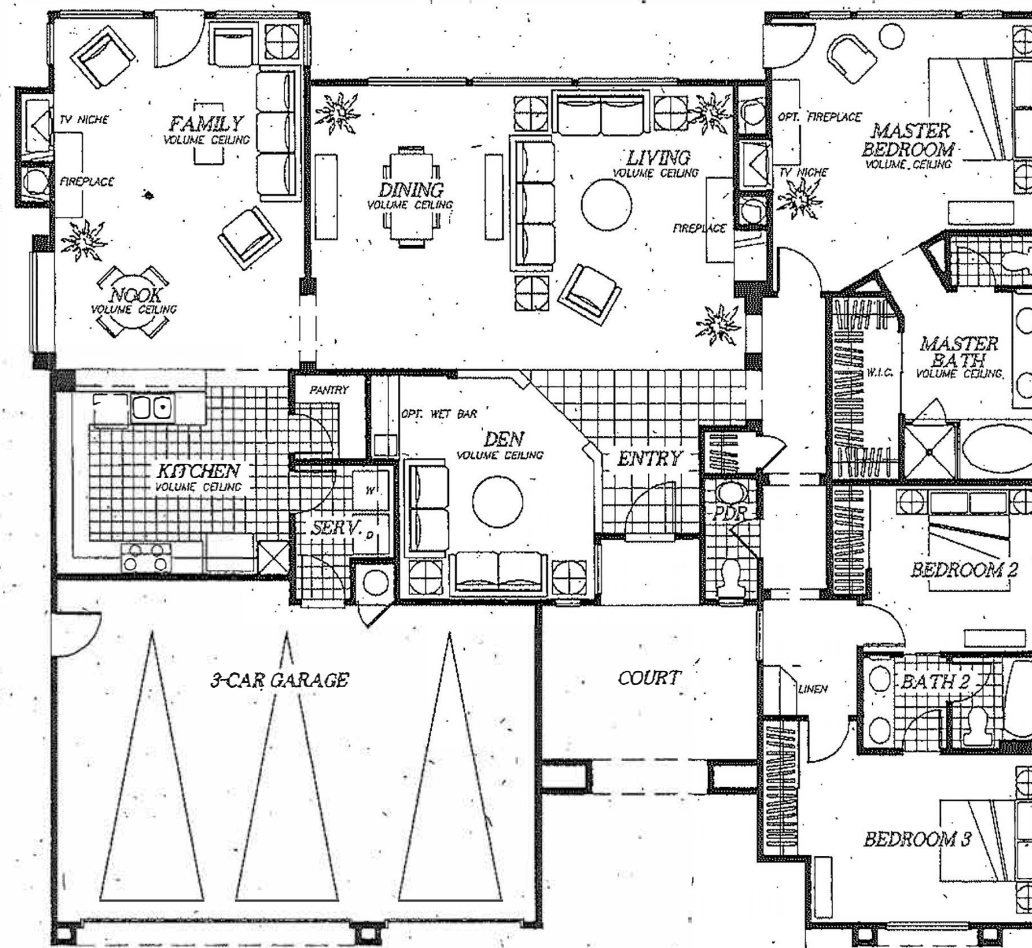
THE HARBOR

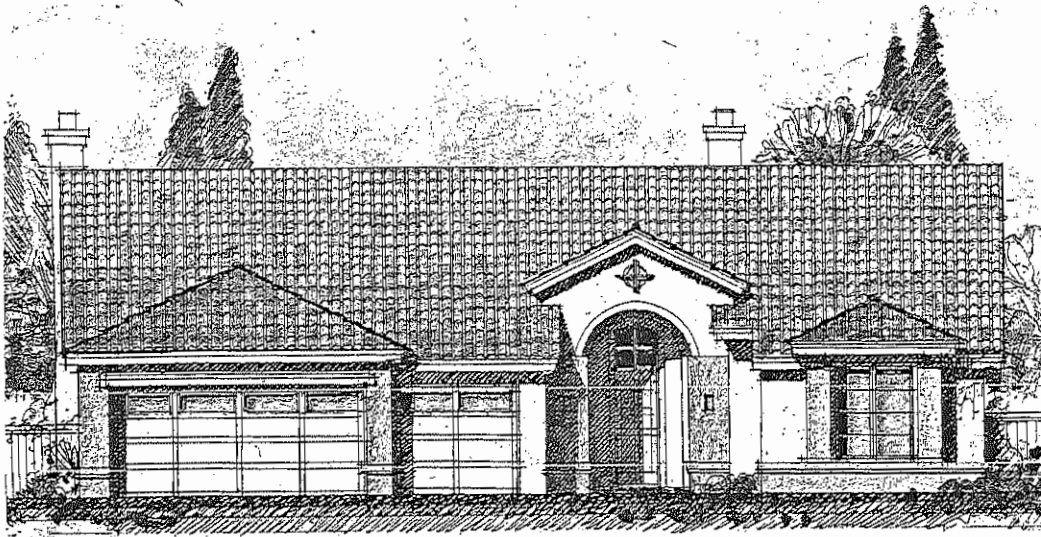
AT THE NAPA YACHT CLUB

SILVERADO

PLAN 4

3 Bedrooms plus den, 2 1/2 Baths, Approximately 2280 sq. ft.

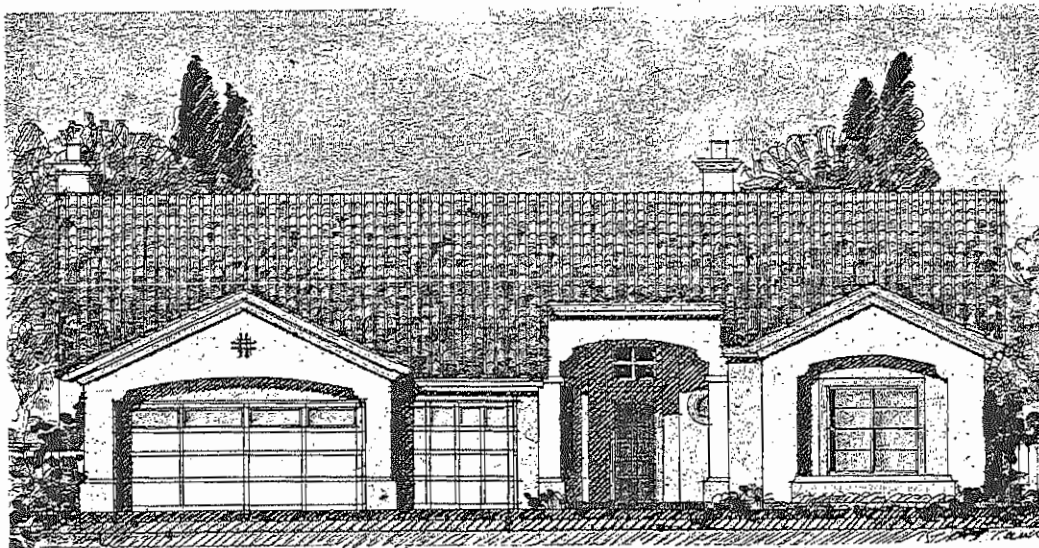




Elevation A



Elevation B



~~A~~ Elevation C

1165 Newport Drive

